

Red Rock Energy Inc.

News Release

Red Rock Releases Results of Drilling Campaigns #1 & #2

Calgary, Alberta (October 24, 2007) – Red Rock Energy Inc. (TSX-V – RRK) announced today that as of October 17, 2007 it had completed Diamond Drilling Campaign #2 at its Red Block 1 property in the Uranium City area. On September 22, Red Rock released partial assay results from its initial Diamond Drilling Campaign #1 which was completed by end August, 2007. The total metres drilled to date is 3095.7 m in 14 holes, with 1705.9 m completed in 5 holes (07RB1-010 to 07RB1-014) during drilling campaign #2 and 1389.8 m completed in 9 holes (07RB1-001 to 07RB1-009) during drilling campaign #1. Table 1 summarizes selected information about each drill hole which has been completed to date, and the approximate locations of each hole are shown in Figure 1.

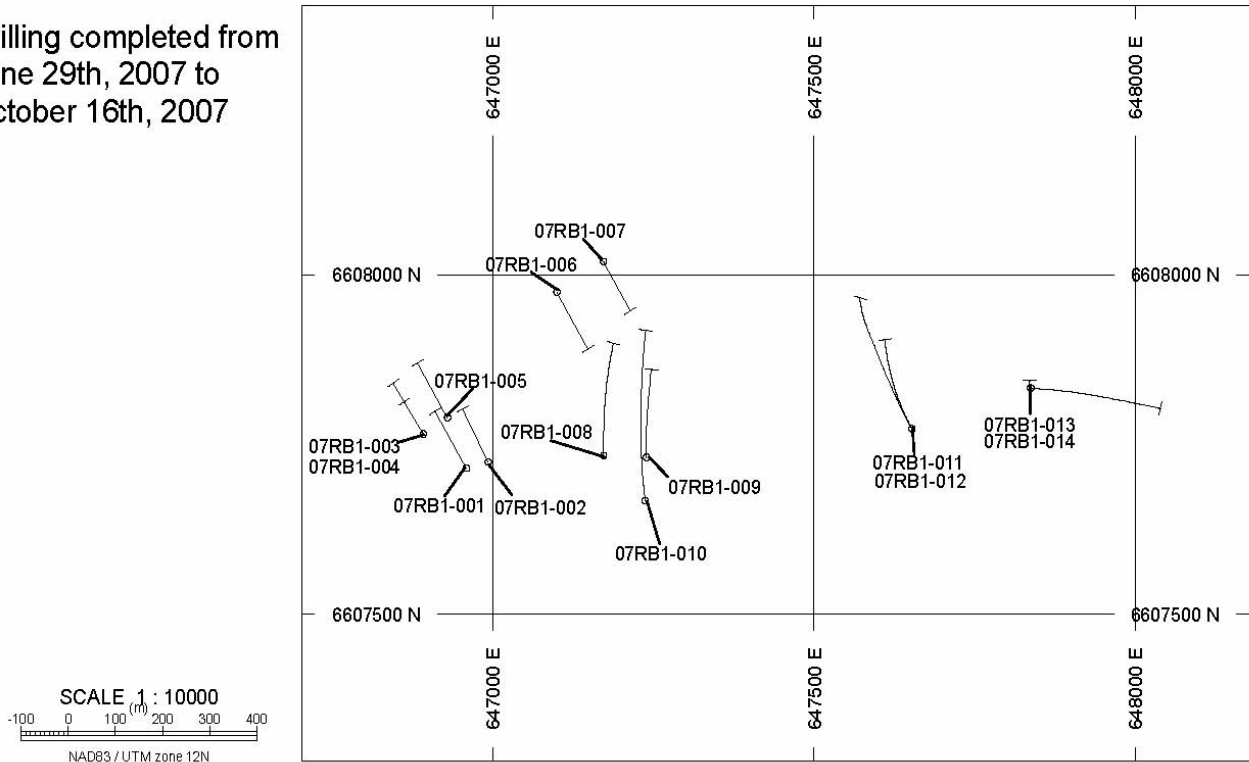
Table 1: Selected Information for DDH Completed During Drilling Campaigns #1 and #2

Campaign	DDH Identifier	Collar Azimuth	Collar Inclination	End of Hole Length (metres)
1	07RB1-001	330°	-55°	169.0
1	07RB1-002	333°	-45°	122.0
1	07RB1-003	328°	-46°	122.5
1	07RB1-004	328°	-70°	160.5
1	07RB1-005	330°	-45°	129.7
1	07RB1-006	150°	-45°	136.8
1	07RB1-007	150°	-45°	118.8
1	07RB1-008	360°	-45°	245.6
1	07RB1-009	360°	-45°	184.9
2	07RB1-010	360°	-45°	361.6
2	07RB1-011	360°	-47°	286.3
2	07RB1-012	330°	-65°	302.9
2	07RB1-013	Vertical	-90°	471.2
2	07RB1-014	095°	-47°	283.8

The drilling program to date was principally designed to follow-up prior drill intersections by others (i.e., the former crown corporation Eldorado Nuclear Limited) and to search for undiscovered uranium zones within Red Rock's Red Block 1 mineral property. A total of 764 drill core samples have been submitted for analysis (756 samples for uranium and 8 samples for gold). To mid-October results have been received for 571 samples, which are the complete results for the first 10 holes, specifically holes 07RB1-001 to 07RB1-010. Results are expected shortly for holes 07RB1-011 to 07RB1-014.

Figure 1: Red Rock Energy Drilling Completed during Campaigns #1 and #2 (coordinates are UTM, Zone 12, NAD 83 datum)

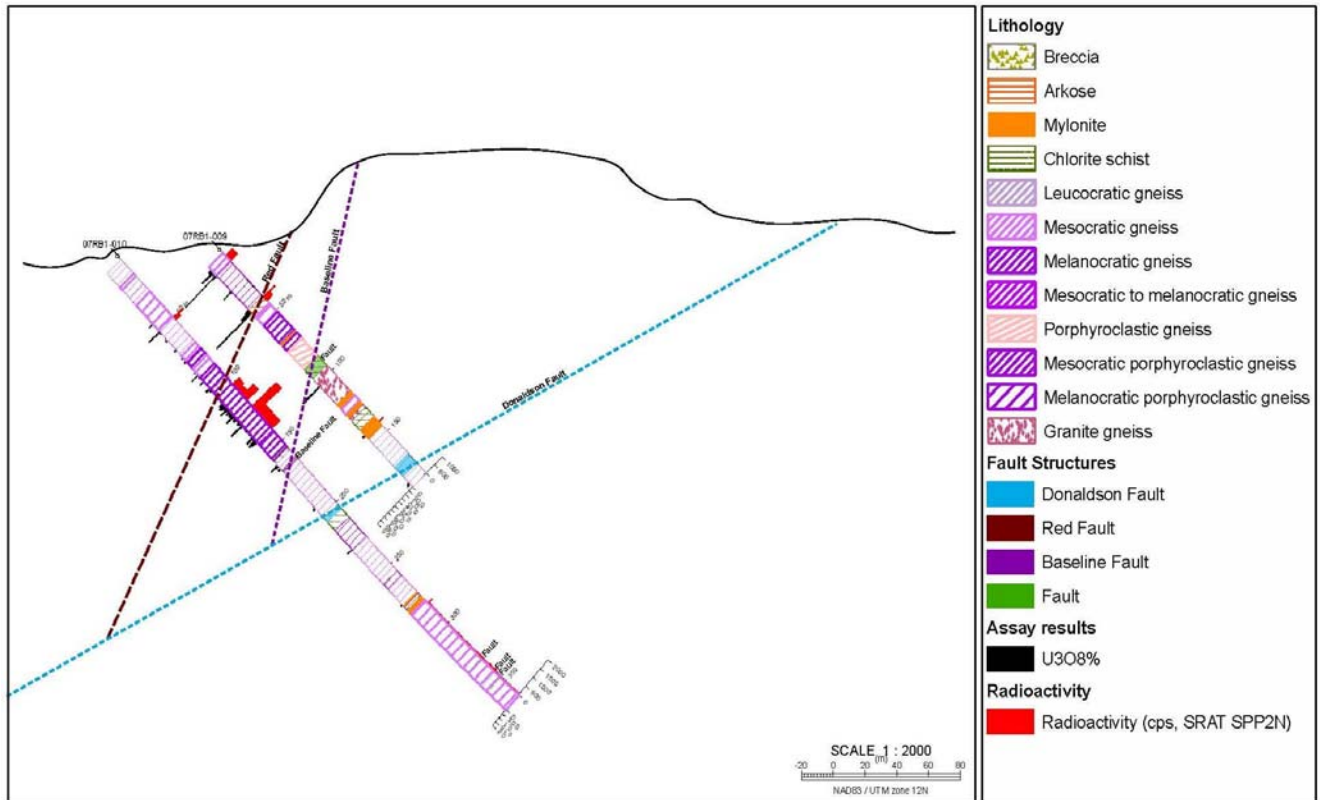
Drilling completed from
June 29th, 2007 to
October 16th, 2007



Uranium result highlights for each of these ten holes, with all intervals being core length, are provided in Table 2. The eight samples that were submitted for gold assay all returned low results.

The uranium result highlights in Table 2 indicate that the drilling to date within Red Block 1 has: (a) intersected anomalously uraniferous zones with widths up to several metres or more, and (b) at least locally there are uranium grades ranging from 0.10% to over 0.30% U_3O_8 , which are the range of grades typical for most of the past producing mines in the Beaverlodge Uranium District. The uraniferous intercepts are associated with intensely cataclasticized leucocratic to melanocratic (mafic poor to mafic rich) gneiss and granitoid rocks, and with various major to secondary faults. Figure 2 illustrates a section for two holes (07RB1-009 and 07RB1-010) that were drilled to test the anomalously radioactive Red Fault zone. The figure shows that the anomalously radioactive intervals continue to depth, and one zone may be widening with depth and possibly controlled by the intersection of the Red Fault with either or both the Baseline and Donaldson faults. It is planned during Drilling Campaign #3, which will begin in early November 2007, to further test the strike and depth potential of the Red Fault radioactive zone.

Figure 2: Preliminary Section for DDHs 07RB1-009 & 07RB1-010; shows anomalous radioactivity (red histogram) and uranium assay results (black histogram)



The Red Rock drilling and geological team will be redeployed to Uranium City on November 1 to continue drill testing selected targets on Red Block 1 from early November to mid-December 2007. Further, after a break for the Christmas – New Year holidays, drilling will resume in mid-January 2008.

In reviewing the drill results from these ten holes, Sandy Loutitt, President of Red Rock, was pleased with the results recorded to date, and commented: “These results are encouraging in light of the fact that the Beaverlodge Uranium District’s thirty years of uranium production (approximately 62 million pounds in total) from the 1950s to early 1980s was predominantly from narrow vein structures ranging from about 1 to 2 m (2 to 6 feet). It appears clear that the grades and widths intersected by Red Rock’s current drilling program are consistent with the historic geological setting of the Beaverlodge mining camp.

“The principle exploration and development philosophy of Red Rock is a) to conduct exploratory and follow-up drilling to generate targets that have intersections of U_3O_8 indicating the presence of prospective uranium mineralized zones, and b) to attempt to determine if selected zones have sufficient extension and grade to begin to classify the uranium-bearing bodies into economically viable resources and reserves categories as required by National Instrument 43-101. At this initial stage of exploration

all the holes tested to date have assay results that indicate at least one or more radioactive uraniferous zone. This provides encouragement that the chemical and mechanical processes necessary to create uranium ore bodies are present within the areas drilled. However, the progression of these zones to resource definition will not begin until a clearer picture of the geological setting and confirmation of the geological model being employed are determined.”

Table 2: Drilling Highlights from Red Rock Energy Inc. Drill Campaigns #1 (holes 07RB1-001 to 07RB1-009) and #2 (hole 07RB1-010 only)

Hole	From (m)	To (m)	Core Length (m)	Average Grade U ₃ O ₈	Results Received
07RB1-001	25.00	25.60	0.60	0.338%	Complete
07RB1-001	43.00	44.00	1.00	0.205%	Complete
07RB1-001	106.0	108.5	2.50	0.083%	Complete
07RB1-001	121.30	123.20	1.90	0.159%	Complete
07RB1-002	65.00	65.70	0.70	0.061%	Complete
07RB1-002	70.25	71.85	1.60	0.049%	Complete
07RB1-002	86.20	92.00	5.80	0.037%	Complete
Including 07RB1-002	90.70	92.00	1.30	0.086%	
07RB1-003	19.50	20.50	1.00	0.049%	Complete
07RB1-003	30.00	35.60	5.60	0.046%	Complete
Including 07RB1-003	34.50	35.60	1.10	0.109%	
07RB1-004	25.20	25.80	0.60	0.619%	Complete
07RB1-004	27.10	27.40	0.30	0.354%	Complete
07RB1-005	32.50	36.80	4.30	0.064%	Complete
Including 07RB1-005	34.60	36.80	2.20	0.083%	
07RB1-006	22.65	24.40	1.75	0.166%	Complete
Including 07RB1-006	23.25	24.15	0.90	0.268%	
07RB1-007	11.00	15.70	4.70	0.033%	Complete
07RB1-007	16.85	19.50	2.65	0.057%	Complete
07RB1-007	22.80	23.10	0.30	0.201%	Complete
07RB1-007	78.70	80.00	1.30	0.041%	Complete
Including 07RB1-007	79.20	79.50	0.30	0.114%	

Hole	From (m)	To (m)	Core Length (m)	Average Grade U ₃ O ₈	Results Received
07RB1-008	45.50	57.10	11.60	0.020%	Complete
Including 07RB1-008	55.10	56.60	1.50	0.058%	
07RB1-008	102.10	104.60	2.50	0.118%	Complete
Including 07RB1-008	103.60	104.50	1.00	0.221%	
07RB1-008	143.00	144.20	1.20	0.160%	Complete
07RB1-008	195.30	196.00	0.70	0.103%	Complete
07RB1-008	199.50	200.50	1.00	0.058%	Complete
07RB1-009	4.60	9.60	5.00	0.067%	Complete
Including 07RB1-009	5.93	8.93	3.00	0.090%	
07RB1-009	21.93	22.93	1.00	0.056%	Complete
07RB1-009	37.93	40.27	2.34	0.131%	Complete
Including 07RB1-009	38.60	40.27	1.67	0.166%	
07RB1-009	100.93	101.60	0.67	0.130%	Complete
07RB1-010	50.20	50.70	0.50	0.141%	Complete
07RB1-010	109.50	126.80	17.30	0.034%	Complete
Including 07RB1-010, and	118.70	119.20	0.50	0.102%	
Including 07RB1-010	126.30	126.80	0.50	0.149%	
07RB1-010	136.30	139.80	3.50	0.049%	Complete
07RB1-010	158.30	159.80	1.50	0.053%	Complete

Reg A. Olson, Ph.D., P. Geol., a Qualified Person under NI 43-101 and supervisor of the 2007 field and drill program, has reviewed and is in agreement with the contents of this release.

For further information, contact Sandy Loutitt, President, or Lara Cull, Operations Manager; Ph -403-685-1047, or visit: www.redrockenergy.ca.

THE TSX VENTURE EXCHANGE DOES NOT ACCEPT RESPONSIBILITY FOR THE ADEQUACY OR ACCURACY OF THIS RELEASE.

READER ADVISORY

Statements in this press release may contain forward-looking information including expectations of future production, operating costs, commodity prices, administrative costs, commodity price risk management

activity, acquisitions and dispositions, capital spending, access to credit facilities, income taxes, regulatory changes, and other components of cash flow and earnings. The reader is cautioned that assumptions used in the preparation of such information may prove to be incorrect. Events or circumstances may cause actual results to differ materially from those predicted, a result of numerous known and unknown risks, uncertainties, and other factors, many of which are beyond the control of the company. These risks include, but are not limited to, the risks associated with the mining industry, commodity prices and exchange rate changes. Industry related risks could include, but are not limited to, operational risks in exploration, development and production, delays or changes in plans, risks associated to the uncertainty of reserve estimates, health and safety risks and the uncertainty of estimates and projections of production, costs and expenses. The reader is cautioned not to place undue reliance on this forward-looking information.

The reader is further cautioned that the preparation of financial statements in accordance with generally accepted accounting principles requires management to make certain judgements and estimates that affect the reported amounts of assets, liabilities, revenues and expenses. Estimating reserves is also critical to several accounting estimates and requires judgments and decisions based upon available geological, geophysical, engineering and economic data. These estimates may change, having either a negative or positive effect on net earnings as further information becomes available, and as the economic environment changes.